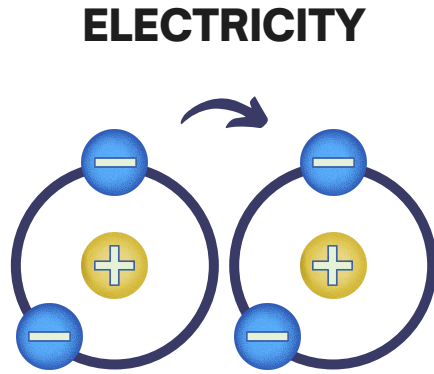




TERMS RELATED TO ELECTRICITY



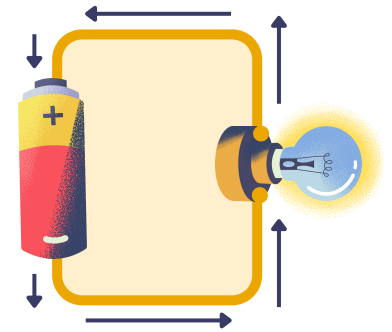
energy created
when electrons
move from one
atom to another

STATIC ELECTRICITY



produced when two
objects are rubbed
together, creating
friction

ELECTRIC CURRENT



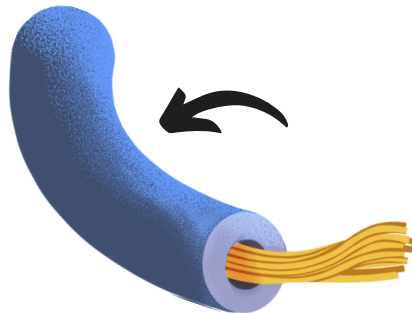
the flow of
electric charge
in a circuit

CONDUCTOR



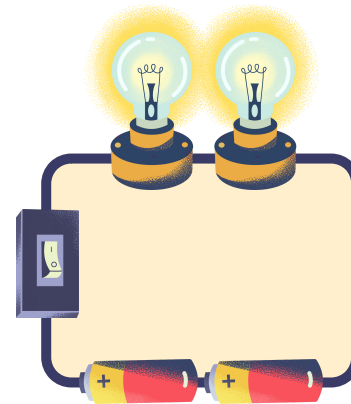
an object that **allows**
electricity to flow
through it

INSULATOR



an object that **does
not allow** electricity
flow through it

CIRCUIT



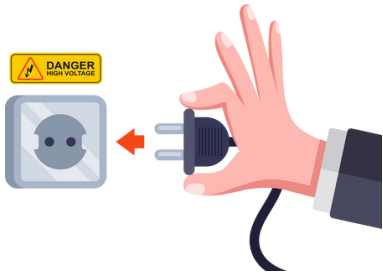
a path for electric
current to flow

FUSE



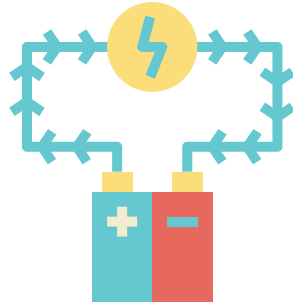
a safety device
that protects an
electric circuit
from excessive
electric current

WATTAGE



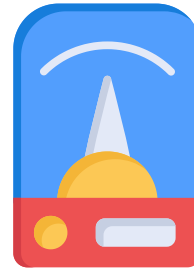
the amount of
power a device
is using

VOLTAGE



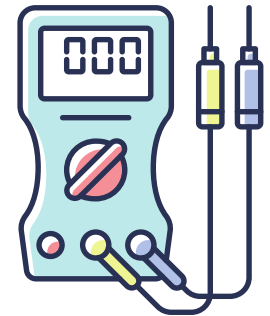
the electric
pressure that
pushes current
around a circuit

VOLT



a unit used to
measure electric
pressure

AMPERE



a unit used to
measure electric
current